

# Ideas For Club Events

This is the most exciting part of the club. Organizing events to get the members together and have some fun! Here are some quick and easy ideas for events to have that are fun and create some excitement for your new club!

1. "Z Car Hunt"- Have all members meet at one of your local Nissan dealers. Instruct them to bring a disposable camera (exposure) with Them. Next, team everyone up in pairs and give each team 25 to 30 flyers. Send them off for one hour to drive around town and hunt down Z cars. When they tag a Z car with a flyer, have them take a picture of one of the team members placing the flyer on the Z. This makes for interesting pictures that are great for your clubs newsletter! Good places to hunt cars are shopping malls, retail stores, sporting events, or anywhere you might find a lot of cars.
2. Z Car show at local Nissan dealership- Call all members and plan a Z only Car show at your local Nissan dealer. Have hot dogs, Sodas, prizes, and have a peoples choice judging for best Of show. This generates excitement and also gets you new Members! It's also a good idea to cruise around town the Weekend prior to the show and hand out flyers on Z cars So they are informed. You will definitely be surprised at Who shows up!
3. Road trip- Plan a scenic road trip on a Saturday morning. Have everyone meet at one location and have maps prepared with your destination planned out. Driving in a caravan of Z cars is very exciting and impressive.



A CLUB QUIZZ [3/21/91]

The PICK column contains in numerical sequence the answers to match up with the appropriate MODEL / COLOR per our Membership Applications. Place your GUESSES in that column and the ANSWERS will be provided.

Good Luck and Have Fun!!

Model:	Ans.	Guess	Pick	Colors:	Ans.	Guess	Pick
Fairlady	<u>2</u>	—	1	Beige	<u>2</u>	—	1
1600 Rdst	<u>4</u>	—	2	Black	<u>20</u>	—	1
2000 Rdst	<u>6</u>	—	4	Blue	<u>54</u>	—	1
240: 1970	<u>12</u>	—	4	Bronze	<u>5</u>	—	2
1971	<u>19</u>	—	5	Brown	<u>13</u>	—	4
1972	<u>47</u>	—	6	Burgundy	<u>11</u>	—	5
1973	<u>38</u>	—	6	Gold	<u>17</u>	—	5
260: 1974	<u>22</u>	—	9	Green	<u>15</u>	—	6
280: 1975	<u>6</u>	—	11	Grey	<u>24</u>	—	11
1976	<u>17</u>	—	12	Maroon	<u>6</u>	—	13
1977	<u>34</u>	—	12	Orange	<u>29</u>	—	13
1978	<u>31</u>	—	13	Persimin	<u>1</u>	—	15
1979	<u>13</u>	—	13	Pewter	<u>5</u>	—	17
1980	<u>9</u>	—	14	Primer	<u>4</u>	—	20
1981	<u>12</u>	—	14	Red	<u>54</u>	—	24
1982	<u>14</u>	—	17	Silver	<u>36</u>	—	29
1983	<u>21</u>	—	19	White	<u>47</u>	—	36
300: 1984	<u>20</u>	—	20	Wine	<u>1</u>	—	47
1985	<u>14</u>	—	21	Yellow	<u>13</u>	—	54
1986	<u>13</u>	—	22	Various	<u>1</u>	—	54
1987	<u>5</u>	—	31				
1988	<u>4</u>	—	34				
1989	<u>1</u>	—	38				
1990	<u>11</u>	—	47				

31 MEMBERS CARS - No. Color Provided  
 ← EXCLUDES A 1975 MODEL 15, W/8'S

Z Club of Texas

GIMMICK ROAD RALLYE INFORMATION BOOKLET

Table of Contents

General Overview

- Map to Start Line

Frequently Asked Questions

General Instructions

Sample Numbered Route Instructions

Sample Questions

Forms: Odometer Checking Card

Master Score Card

Registration & Waiver of Liability

Prepared: July, 1989.

by: "Mad" Mike Taylor

Rallye Master

GIMMICK ROAD RALLYE INFORMATION BOOKLET

GENERAL OVERVIEW

\*\*\*\* THE RALLYE IS RUN - RAIN OR SHINE [if Raining, all SPEEDS REDUCED 10mph]. \*\*\*\*

NECESSITIES:

- Each car should have a clipboard, several working pens/pencils, a watch and a sense of humor. [Maps are optional - we've planned for that contingency].

CHECK-IN PROCEDURES:

- Rallye morning at 8:30am the final Check-in procedures will take place at Wang Laboratories [1420 Rochelle] - map attached. RALLYE HOT LINE: 214-533-0922
- All Registration forms, driving licenses and proof of insurance will be checked. \*\*\*MISSING INFORMATION OR FALSIFICATION OF INFORMATION = DISQUALIFICATION\*\*\*
- At approximately 9:00, the Rallye Master will review the Generals with everyone simultaneously and answer any [ALMOST ANY] questions about the Rallye.

STARTING THE RALLYE:

- At 10am, all cars will line up at the Start Line and be given their Rallye Car Number, Odometer Mileage Checkcard and envelope for LEG 1.
- The LEG 1 envelope contains Numbered Route Instructions, Score Card plus a PANIC Map of Rallye Checkpoint locations [in the RARE case you might get lost].
- You will have a minute to review the contents before you start LEG 1.  
[Cars will be spaced ONE MINUTE apart at the Start Line].
- A Rallye Official will record your Starting Time & Mileage on your Score Card.

ODOMETER CHECKPOINT:

- The ODOMETER Checkpoint is used to record your odometer miles to adjust for tire-size etc. for use in calculating Time, Speed and Distance points.

CHECKPOINT PROCEDURE:

- As you arrive at a Checkpoint, pull-up to the Stop Line where your Time and Mileage will be recorded by a Rallye Official on your Score Card.
- You may take UP TO 20 MINUTES at a Checkpoint to rest, review answers, etc.
- When ready to leave, approach the Checkpoint Start Line. You must hand in your Score Card from the preceding Leg BEFORE receiving the next leg's package.
- A Rallye Official will record your Starting Time/Mileage on your new Score Card.

FINISH LINE PROCEDURE:

- Same entry procedure as at a Checkpoint. You must hand in your Score Card and any Scavenger Item(S) [if applicable] before proceeding to the refreshments.

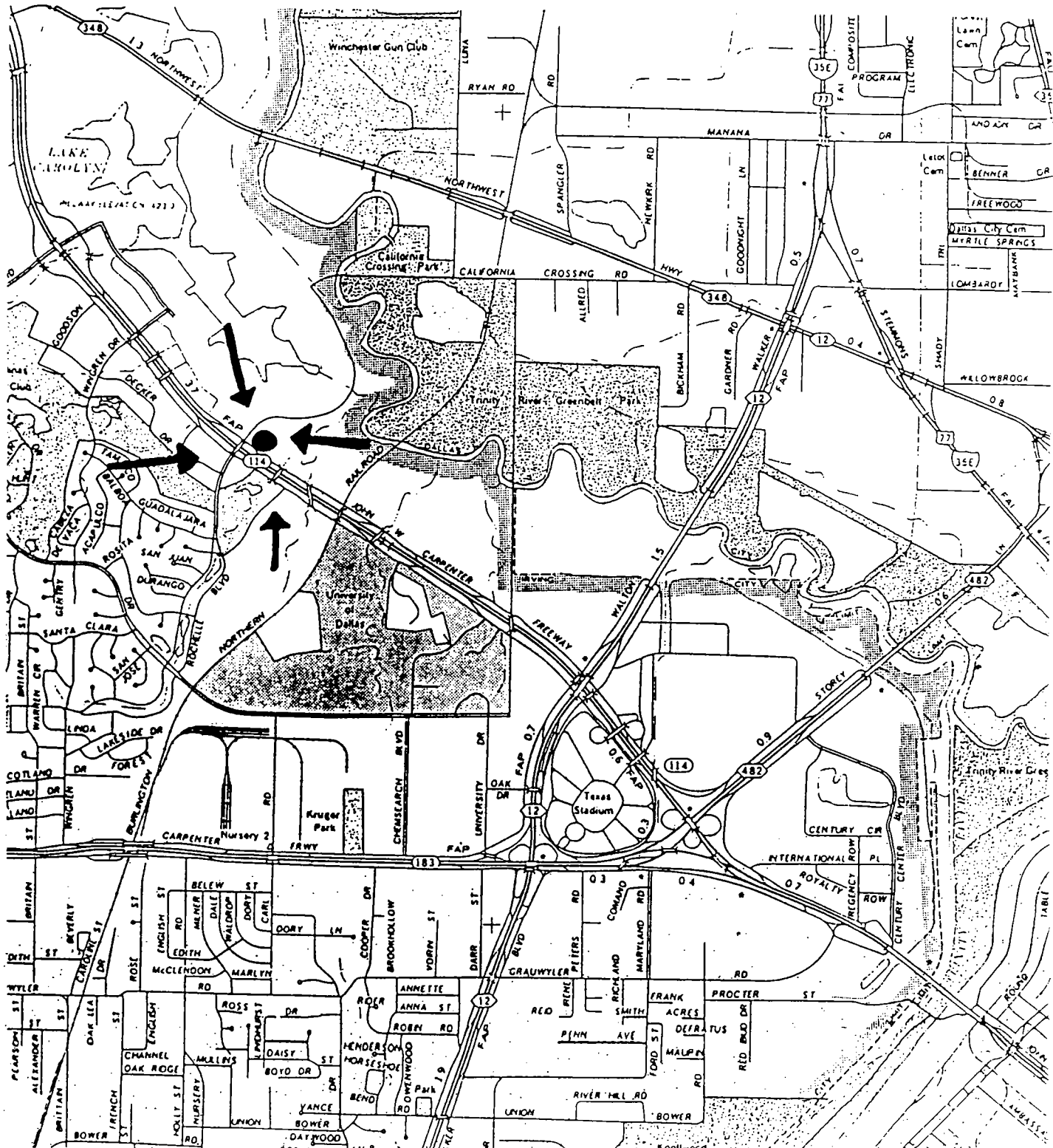
NUMBERED ROUTE INSTRUCTIONS [NRI] / SCORE CARD:

- As you record answers on your Score Card, also keep track of these answers on your NRI. They are yours to keep and will come in handy when we review answers.
- After all Rallyists have arrived at the Finish Line, the Score Cards will be tallied. Before announcing the results, the Rallye Master will review the entire Rallye with all participants to ensure there were no mistakes in the Rallye.
- If there's a mistake [HIGHLY UNLIKELY - Rallye Master says with fingers crossed] adjustments will be made before finalizing Rallye scores and awarding prizes.

DIRECTIONS TO WANG LABORATORIES, 1420 Rochelle [ RALLYE HOT LINE: 214-533-0922

Wang is located in the Waterside Commons complex of offices in the Northeast corner of the junction of Hwy. 114 and Rochelle.

Heading North on Rochelle above Hwy 114, take the FRIST RIGHT into the Private Driveway and then an IMMEDIATE LEFT, go under the building and you will be at the STARTING POINT of our Rally.



GIMMICK ROAD RALLYE INFORMATION BOOKLET

FREQUENTLY ASKED QUESTIONS

WHAT'S A Z CLUB GIMMICK RALLYE?

A Z Club of Texas Gimmick Road Rallye is designed to challenge the alertness, awareness and communication skills of Rallyists. The ability of the Driver and Navigator to operate effectively as a team generally results in high Rallye scores.

WHAT DO YOU DO ON THESE RALLYES?

Simply stated, you operate your vehicle over a predetermined course, getting from one Checkpoint to another by following sequential directions contained in the Numbered Route Instructions [NRI]. Along the way, you are asked questions pertaining to things you encounter on or near the Rallye route and some General Knowledge Questions.

Points are awarded for the most correct answers, sealed Panic Envelopes and for Time and Distance most closely matching the Official Rallye Time and Distance. Sometimes, you are asked to obtain a Scavenger Item(s) which also counts in your final score.

The Rallye is governed by General Instructions - a series of rules NOT presented in the NRI, but which are integral to making the correct decisions about which direction to take in implementing an NRI correctly. Don't panic yet - you're allowed to bring the Generals with you on the Rallye.

OK. BUT WHAT ACTUALLY HAPPENS - WHAT ARE THE MECHANICS?

STEP #1: Rallyists meet Rallye morning to review the Generals and receive any updates about the Rallye route. At times, things change overnight requiring an update to the NRI and/or the Generals. All driving licenses, proof of insurance and vehicle registration/ownership are checked and Rallyists line up at the Start Line [hopefully in their cars] to receive their Rallye Car Number.

Please Note: Rallye Officials at the START LINE reserve the right to reorder the positions of the cars before or after the numbering process.

STEP #2: At the Start Line, Rallyist receive the package for LEG #1 which contains:

- a. ODOMETER CHECKING CARD - used to calculate differences in tire size and pressure versus the Official Rallye Miles;
- b. SCORE CARD for LEG #1 - used to record your answers, time & mileage;
- c. NRI [Numbered Route Instructions] for LEG #1 - the sequentially numbered instructions and questions for the Rallye Route;
- d. PANIC ENVELOPES - one to Odometer Checkpoint, one to Checkpoint #1. These are maps in sealed envelopes to be used in case you get lost or are about to kill each other over trying to determine which direction to take next.

STEP #3: As you review your package, a Rallye Official records on your SCORE CARD:

- a. your starting odometer reading [NOT trip odometer].
- b. time out [usually a minute after you receive your package].
- c. when you MUST open your PANIC ENVELOPE - the time you must open your sealed map showing the location of the next Checkpoint. If you haven't arrived at the Checkpoint by the time indicated in this box, you're either lost or running way behind and have to catch up - we don't want cars arriving at the Finish Line after midnight.

GIMMICK ROAD RALLYE INFORMATION BOOKLET

FREQUENTLY ASKED QUESTIONS

STEP #4: You start the Rallye and [hopefully] get to the ODOMETER CHECKPOINT where you hand the Rallye Official your ODOMETER CHECKING CARD and ODOMETER PANIC ENVELOPE. After your mileage is recorded, proceed with the Rallye.

STEP #5: Continue the Rallye and arrive at the next CHECKPOINT where your time and mileage is recorded by a Rallye Official as you enter the Checkpoint. You then have up to 20 minutes to rest, review answers, etc. before continuing.

STEP #6: Pull up to the CHECKPOINT Out Marker and hand the Rallye Official your SCORE CARD and PANIC ENVELOPE from the Rallye Leg you have just completed.

The Rallye Official will then hand you the package for the next LEG and record on your SCORE CARD the items listed above in STEP #3. The Rallye Official will then indicate when you can leave to continue the Rallye.

STEP #7: At the FINISH LINE, review and complete your answers on your SCORE CARD. Hand in your SCORE CARD and PANIC ENVELOPE and then enjoy the refreshments.

INSIDE TIPS FOR NOVICES

- Always remember SAFETY COMES FIRST! While out to have a good time, we don't want the day marred by an accident or worse. Please remember:

The Rallye is NOT a matter of life and death, but ignoring SAFETY can be!!

- Use your DIRECTIONALS for changing lanes and making turns!
- If you want to discuss an NRI or take a closer look at something, pull over to the side of the road! Other drivers are NOT on your Rallye and will not know why you stopped in the middle of the road to look at a sign!
- The Navigator should read aloud and ahead to have the Driver assist in answering questions and alert the Driver to upcoming Action Points.
- Cross-off each NRI and Question as completed. The NRI and Questions are sequential - if you lose your place, you could really be Off Course. The Questions are sequential in conjunction with themselves and the NRI. If you don't see the answer to a Question but do see the next NRI, it means you have missed the Question. Everything's sequential!
- If you find you've missed a Question, don't hesitate to go back and locate the required information. In Gimmick Rallyes, the majority of the points are allocated to the Questions.
- If you don't see a Navigational Aid, OCM, Action Point or an opportunity to answer a Question for what seems to be a long time [say, over 5 minutes], you are probably Off Course. Go back to a NRI or Question you feel is correct and continue the Rallye from that point.
- Drivers and Navigators may switch places provided EACH has a valid license.
- Check your car to ensure it's in such good shape it could pass State Inspection Rallye morning. Good idea to have your gas tank FULL at the START LINE.

Z Club of Texas  
Gimmick Road Rallye

GENERAL INSTRUCTIONS

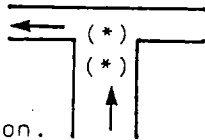
THE FOLLOWING GENERAL INSTRUCTIONS ARE NUMBERED IN THEIR ORDER OF EXECUTION PRIORITY.

1. ALL traffic and safety rules must be obeyed at all times - they ALWAYS supersede any Rallye General Instructions or Numbered Route Instructions (NRI). SEAT BELTS and HEADLIGHTS MUST BE ON AT ALL TIMES [failure = 50 penalty points each time].
2. When approaching a four-corner intersection, after obeying applicable traffic controls [e.g. TL, SS etc.], proceed through the intersection unless specifically instructed otherwise or an applicable General Instruction(s) takes precedence [e.g. if the road ahead = gravel, therefore 'Doesn't Exist', now at a "T"].
3. Always follow the Center Line on the pavement [whether solid, broken or implied] unless specifically instructed otherwise or an applicable General Instruction(s) takes precedence [e.g. arriving at a "Y" junction].
4. Landmarks or signs used during the Rallye are located on the RIGHT and visible from the car. A landmark/sign located on the left DOES NOT EXIST unless it is specifically referenced by "SQL" or "LOL" [Sign/Landmark On Left] in the NRI.
5. Driveways, private and non-paved roads [i.e. no hard surface (cement, asphalt)], roads labeled [either capitalized or not] "Dead End", "No Outlet", "Not a Through Street", "No Thru Traffic" [ONLY when the sign is visible near their beginning], "Court" [or any abbreviation thereof] and public roads with barricades blocking their use DO NOT EXIST unless they are specifically referenced in the NRI.
6. When on a road, if you encounter a sign pertaining to this road, either capitalized or not, reading or RIP "Dead End", "No Outlet", "Not a Through Street", "No Thru Traffic" or if this road becomes and/or your only alternative(s) is a private road, driveway, non-paved road, or there is a barricade blocking its use, Reverse Course as soon as SAFETY dictates if no NRI is given to the contrary.
7. When put on a road by Name, Number or Letter, take whatever legal action(s) is required to remain on that road until a NRI takes you off that road. [Only the terms "ONTO", "ON" or "PU" can place you on a road by Name, Number or Letter].
8. Always TURN LEFT at a "T" junction unless a specific NRI directs otherwise [this instruction WILL ALWAYS read: "R at T"] or an applicable General Instruction(s) takes precedence [e.g. reaching a "Dead End"].

- It is **assumed** that a "T" junction is always approached from the vertical leg.

An example of a "T" junction is:

An intersection with these characteristics is a "T" only when approached from the bottom direction.

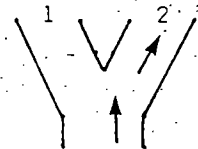


Some "T"'s may look like a "Y" if there's a buildup of dirt, gravel, etc. at the (\*). Rely on the "T" & "Y" definitions.

9. Always BEAR RIGHT at a "Y" junction unless specifically instructed otherwise or an applicable General Instruction(s) takes precedence [e.g. "R" = "No Outlet"].

- A "Y" junction is defined as the road splitting off in two separate directions.

It is not possible to go straight at a "Y". Example:



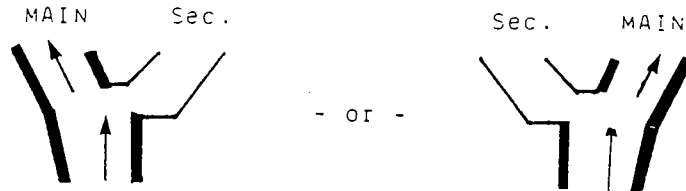
NOTE: You must have two separate, roughly equal roads leaving from the junction for this junction to qualify as a "Y".

Z Club of Texas  
Gimmick Road Rallye

GENERAL INSTRUCTIONS

10. At some intersections, a secondary road branches off from the MAIN road, while the main road veers in the opposite direction, creating the illusion of a "Y" junction. These intersections ARE NOT "Y" junctions as defined above - refer to 'Center Line' General Instruction or a specific NRI [if applicable].

Examples would be:



THE REMAINING GENERAL INSTRUCTIONS DO NOT REQUIRE ANY EXECUTION PRIORITY.

- All NRI and Questions are in and should be executed in SEQUENTIAL order. "HH" [Helpful Hints] are NOT integral to the order of the Rallye Course.
- Each NRI and Question is to be completed BEFORE going on to the next NRI. Check-off or cross-out each NRI as completed to avoid confusion.
- Quotation marks are used in the NRI for ALL street names [e.g. "Main St"] and any information [all or in part] taken LITERALLY from a sign. This literal condition includes capitalization, punctuation, spelling, etc. The word 'sign' means the entire area encompassed by the outer physical borders, not dividers thereon.
- Whenever a word(s) is taken from a sign, out of context, it will always be preceded by "RIP" [Reading In Part]. "RIP" also means Sign Reading In Part.
- Comments in " [ ] ", preceded by "HH:", are 'Helpful Hints' to assist the Rallyist and are NOT to be considered as NRI.
- Most Rallyes have what is known as a "Forced" or "Mandatory" turn. This is not to be considered an "Action Point". For example:

If your NRI reads "R at first OPP past RIP "Shell"", and you encounter a "Forced" turn to the right because the road only goes in that direction, this is not to be considered your "R at first OPP". You are to continue through this "Forced" ["Mandatory"] turn and then begin to look for your "R first OPP past RIP "Shell"."

- The term "PAUSE" is used to indicate actually stopping for the specified amount of time indicated in a NRI. ALWAYS ensure the actual location of your 'pausing' is safe and doesn't represent a potential hazard.
- The term "ITIS" [If There Is Such] may appear anywhere in a NRI. When "ITIS" appears, execute the NRI ONLY if the landmark, sign and/or Action Point actually exists on and/or near the Rallye Course AND execution doesn't violate any other General Instruction(s). If it is not possible to execute the "ITIS" NRI, check-off [cross-out] that NRI as being 'completed' and proceed to the next NRI.
- The term "WCF" [Whichever Comes First] may appear at the end of a NRI which will contain two or more possible alternatives separated by the term "-OR- ". Execute the alternative which comes FIRST, consistent with the General Instruction(s), and completely ignore the balance of this NRI.

Z Club of Texas  
Gimmick Road Rallye

GENERAL INSTRUCTIONS

- Normally, only one General Instruction will apply at an Action Point (absent a NRI). If more apply, they will be consistent with the required Rallye direction [e.g. at a junction, the road ahead is gravel = "Does Not Exist" = "I" = auto L].
- Navigational aides [usually "RIP"'s] are provided for On Course confirmation.
- All the above General Instructions also apply to all Rallye QUESTIONS [Q: \_\_\_\_]. Any errors in the Questions are intentional. Also BE ALERT, some Questions may come back-to-back and/or immediately at and/or after an Action Point.
- OCM [Off Course Marker]: Strategically located in the NRI you may see indented the term 'OCM' and a sign, landmark, etc. indicating you are OFF COURSE. This indication is followed by directions to get you, hopefully, BACK ON COURSE.

IMPORTANT: Concentrate on the NRI, Questions and "HH"'s, but read ahead and be aware of any "OCM"'s coming up to ensure you are on course.

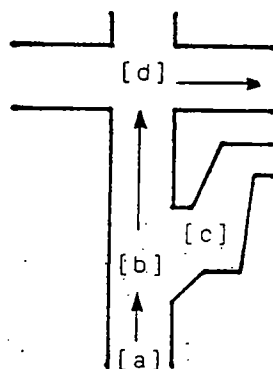
- For any unforeseen delays, obtain as much VERIFIABLE information as possible to ensure you receive proper time credit [e.g. locomotive serial number, etc.]. BE SURE TO RECORD THE TOTAL MINUTES YOU ARE DELAYED ON YOUR SCORE CARD and RECORD THE REASON(S) AND VERIFIABLE INFORMATION ON THE BACK OF YOUR SCORE CARD.
- Any modifications, additions, deletions, etc. to these General Instructions may be given to Rallyists at any time and become an official part of the Rallye.
- In case you get lost [you know you're lost if you are on any Rallye leg for more than 1 hr \_\_ min.], open the PANIC ENVELOPE provided to determine the next Rallye destination. YOU MUST OPEN YOUR PANIC ENVELOPE BEFORE OR AT THE TIME INDICATED ON YOUR SCORE SHEET. SEALED Panic Envelopes submitted at Checkpoints = extra points.

##### Rallye Hotline Number: \_\_\_\_ - \_\_\_\_ - \_\_\_\_ #####

General Instructions are NOT presented in the NRI. Unless specifically instructed otherwise, the General Instructions govern course actions.

Rallyists tend to get 'Off Course' when they fail to execute an applicable General Instruction(s) at Action Points before going to the next NRI.

For Example:



You are travelling from Point [a] and the next NRI is "R first OPP."

You come to intersection [b] and are not sure if you should take [c]. No indication is given because the 'Center Line' General Instruction is applicable here. Also, to legitimately take [c] would require a "BEAR" NRI [Refer to Page 4 for an explanation of all Rallye Abbreviations].

The first LEGITIMATE Action Point in our example for a "R first OPP." is at intersection [d].

Our Rallye has some CHALLENGING Action Points. Based on Rallye Officials' 'dry runs', OCM's may be included in your NRI. Absent an OCM, if you find yourself Off Course because nothing matches your NRI, return to a Rallye NRI or Question you know is right and continue the Rallye from there. GOOD LUCK and BE ALERT !!!

